

CASPHER

Chlamydia Awareness Screening Programme for Hull
and East Riding

CONIFER HOUSE

32-36 PROSPECT STREET

HULL

HU2 8PX

Tel: 01482 336397

Fax: 01482 336399



Newsletter Date
November 2009

Volume 1, Issue 1
Karen Armstrong

Inside this issue:

Newsletter is back after 3 years!!!

After three years the Caspher Newsletter has been revamped and is back with all the latest news and developments within the Team.

THE TEAM

As you can imagine many developments have occurred over the last three years; the team has grown from 4 members to a massive 11!! So this is a good opportunity to introduce the new staff. [Sue Oxton](#) is the new Co-ordinator of the team and has been in post since Sept 2009. Sue has come from School Nursing and her knowledge and expertise is greatly welcomed. [Emma Parish](#) joined the team in 2007 from Gynaecology and is also EC and FP trained. [Sharada Simpson](#) joined us from GUM in August 2009. Both Emma and Sharada manage sites and are Nurse Advisors delivering treatments and

health advice. Three new Support Workers joined the team 2 years ago these are [Justeen O'Neill](#), [Lisa Templeman](#) and [Tonian Lowe](#) whose area of expertise is travelling the length and breadth of Hull and East Yorkshire managing their sites and gaining screens wherever they can. You may often see them hanging about the toilets in various pubs and clubs gaining screens. Alongside these new team members we also have [Matthew Southard](#) and [Emily Gainer](#) who joined the ever growing numbers in May. Emily and Matthew provide invaluable admin support in the office and also help out at large screening events. [Sophie Etheridge](#) also works with Caspher and is the Condom Distributor for the Sexual Health Service playing a major role in the new Kiosk

machines you may have seen in various venues. The only existing members from the original line-up are [Karen Armstrong](#) and [Kirsty Puckering](#). Although their roles have changed slightly over the years. Kirsty is now the Data Analyst for the team, so if its facts, figures and graphs you are after Kirsty is your person. Karen is now a Higher Level Support Officer whose main role within the team is managing the office and organizing Health Promotion.

Many of you will remember [Jo Heil](#) who was the Co-ordinator and lead for the project for many years. Jo left for pastures new in January 2008 and is now the Modern Matron for Sexual and Reproductive Healthcare Partnership, she is based within Conifer House, and so is still on hand to offer her knowledge and expertise for the Team.

WWW.FREETEST.ME

As the postal kits were becoming more popular by the hour in February 2009 we started to offer a new service to the public to help relieve the pressure.

We contacted a company called PREVENTEX who provide a website offering self testing kits which can be sent to your home. This works by the patient logging onto the site, inputting their postcode,

they are then directed to the nearest local site offering the testing. Preventex send the patient a kit to the address of their choice, the patient then takes the test and posts the kit back in the envelope provided. We then receive the results on-line. The patient is sent a text asking them to call our office for the results. An appointment is made with the patient and they receive treat-

ment in the same way a patient who was screened by us would.

Since February 2009 880 tests have been done 69 were positive, and 810 negative giving an 8% positivity rate.

Anyone can use this site so please offer this service to your patients/service users.

FREETEST.ME

The Team	1
Freetest.me	1
GPs	2
Pharmacys	2
Schools	2
New Sites	2
Statistics	3/4

FACTS

- Anyone can get Chlamydia
- Chlamydia is a sexually transmitted infection.
- It is most common among teens and young adults
- Most people who have Chlamydia don't know it.
- You can pass Chlamydia on without knowing it.
- It is easy to treat.
- If you do not treat Chlamydia it can lead to serious health problems

Chlamydia Screening in GP surgeries is on the increase

With the help of Nikki Dunlop, PBC Service Support Manager, the team is now working closely with GP surgeries to encourage the uptake of screening.

The GP surgeries have been provided with training and bins holding self testing kits which are strategically placed in the surgeries. Many practices have devised a letter inviting registered patients between the ages of 15-24 a Chlamydia screening to ensure a maximum uptake. The expectation is that take up should be a minimum of 17% of the registered target age group. Although in 2009-2010 this should increase to 50% of the target audi-

ence.

The kits are monitored by an assigned support worker from the Caspher Team whose responsibility it is to ensure the surgeries are kept in stock with the kits. Caspher have full responsibility of informing the patient of their result and offering treatment when necessary.

This has proved to be working well and the figures at the moment show that Riverside Practice has done the most screens this year with 82 since April.

The DoH have requested 60% of the total screens achieved this year should come from core services such as GPs, Family Planning, TOP and CASH Clinics so in order to reach these targets these sites must increase their screens and we aim to offer as much help as possible for them to achieve this.



Pharmacy Screening

The screening in pharmacies is continuing with the use of the wire bins and also some pharmacies have been offered small countertop bins who have lack of space. These are advertised with the use of the well known tattoo poster.



Schools

After working closely with the schools the team were able to achieve 80 screens at Hornsea School.

The team continue to provide excellent health promotion within the schools around Hull and East Riding delivering talks to year 9 pupils and upwards. The talk provides the pupils with excellent help and advice on their sexual well being and gives them the opportunity to have a test while the team are present. The pupils are also signposted on where to access further services in and around Hull and the East Riding.

Sixth form students are also offered "pee in the pot" days which are always very popular and the latest day at Wyke College provided 200 screens in 4 hours. From these tests 1 positive result was received which proves the message is getting across in the talks.

We have attended the HPV vaccination programme in most schools and colleges offering screening which has been an excellent way to reach another part of the sexually active population.

90 million people are affected by Chlamydia worldwide

New Sites

We continue to gain new screening sites each month. At the moment we are particularly focusing our efforts gaining access into local Leisure Centres and Gyms. Most recently we have placed the self testing kits in Hull University Sports Centre, Beverley, Hornsea, Driffeld Leisure Centres and Pavillion Leisure Centre in Withernsea along with Delta Caravans and William Booth Hostel.

Many new GPs surgeries and Pharmacies are now on board and are all provided with training, posters, bins and self testing kits.

Our continued collaborative working with the pubs and clubs in the Hull and East Riding is very successful and get good screens back at these venues with many of the public taking the test expressing what an excellent idea it is. We regularly visit Cross Keys in Beverley, The Crown, Baracuda and Pozition in Hull and have further new sites on board including the Asylum at Hull University, The Weir in Hessle, Hallgate Tavern, Ringside, Propaganda and Fuel in Hull to name but a few. We would like to extend our thanks to these pubs/clubs for allowing us to use their facilities and provide this service to



their customers.

Each screening site is assigned to a Support Worker or Nurse Advisor and we find this works really well having a named person to contact and who they can build a good working relationship with.

We have also attended Tribfest in 2008 and 2009 giving out lots of condoms, promotional items and offering testing. We gained a total of 122 screens in 2008 and 49 in 2009.



Statistics

We would like to thank all our sites for their continued support and help in achieving the targets we have to reach. We have a number of sites who continue to provide us with high numbers each month and these can be seen from the following information on performance:

Best Performing Pharmacies

Bridlington late Night Pharmacy - ER 51
Hull Late Night Pharmacy—Hull 27

[Positivity Rate for Pharmacies—ER 5%](#)

[Positivity Rate for Pharmacies—Hull 7.5%](#)

Best Performing GP's

Dr Crawford Driffield - ER 49
Riverside - Hull 82
Dr Venugopal—Hull 80

[Positivity Rate for GPs - ER 10%](#)

[Positivity Rate for GPs - Hull 5.4%](#)

Best Performing Family Planning Clinic

Bridlington Hosp - ER 57
Conifer House - Hull 175

[Positivity Rate for FPs - ER 8.6%](#)

[Positivity Rate for FPs - Hull 7.4%](#)

Best Performing Colleges

Bridlington East Riding College 119
Hull College 113

[Positivity Rate for Colleges - ER 1.7%](#)

[Positivity Rate for Colleges - Hull 3.7%](#)

Best Performing Single Site

Conifer House Reception 831

[Positivity Rate for Conifer House 11.5%](#)

Best Performing Voluntary Sector

Cornerhouse—hull 524

[Positivity Rate for Cornerhouse 8.2%](#)

Best Performing Prison

HMP Everthorpe 183

[Positivity Rate for Prisons 3.8%](#)

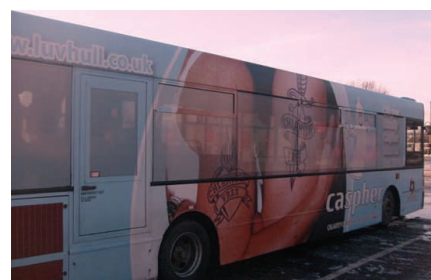
Hull and ER Youth Services

The Warren 32

[Positivity Rate for Youth Services 4.5%](#)

For the year ending 31 March 2009 with your help we screened a total of 9385 for Hull and 7158 for East Riding. The best month was October with a massive 1822 screens!

For the year ending 31 March 2010 we have to achieve 20,600 screens. To date we have achieved 8,812 screens being 5,122 for Hull and 3657 for East Riding. We are short 1,484 screens so far this year so we really need a big push in all areas



THE VALENTINES BUS

In February of this year we hired the Stagecoach CASPHER bus and visited various schools and colleges handing out information on all services available at Conifer House. The Bus was parked in the school or College car park and decorated with red balloons and banners. The pupils then had access to the bus and given help and advice around Chlamydia and other services available. Chlamydia tests were also offered and this proved to be very popular experience with the schools and colleges involved that we had taken the time out to offer this service to them and make it something they would remember and hopefully take away valuable information about sexual health.



Any other News

During the festive period the **CASPHER team** will be handing out matchbook condoms in pubs/clubs/schools/colleges and health fayres alongside offering screening. They can be seen wearing a t-shirt with the design opposite which matches the design on the matchbooks condoms. If you would like us to do a "pee in the pot" event over the festive period please contact us on



01482 336397 and we will be more than happy to attend.

The office will be closed from Thursday 24 December 2009 from 2pm and will reopen on Tuesday 29 December 2009.

TEXT MESSAGING

We have made some adjustments to our texting system as follows:

Follow up re compliance of treatment, partner notification will now be sent via a text a week after treatment.

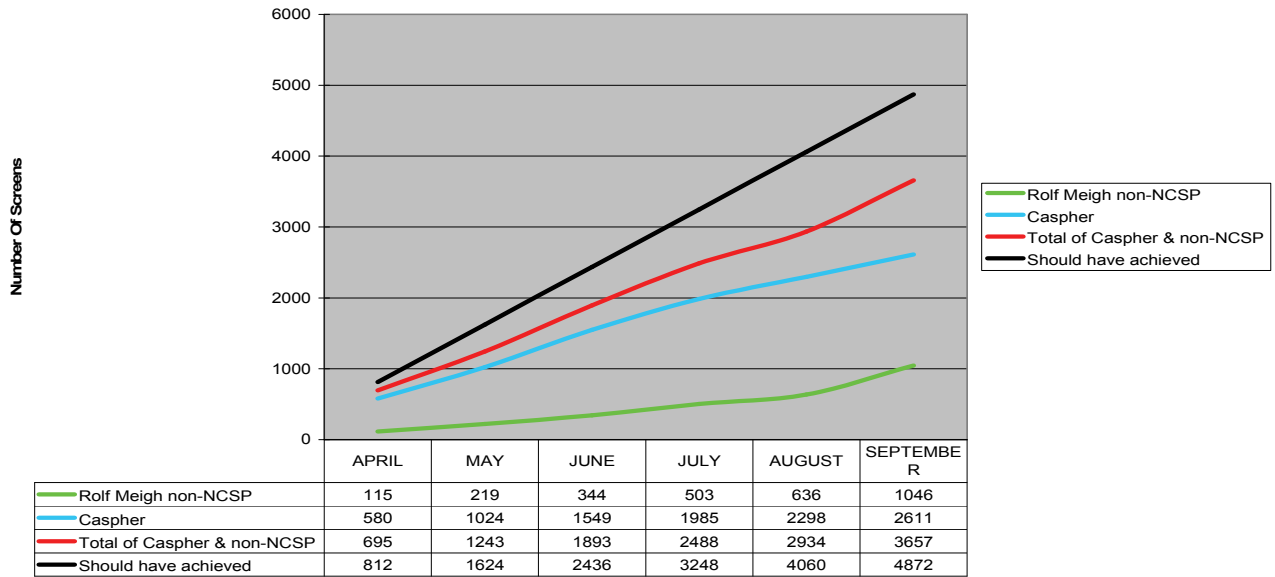
Inhibitory Specimens a text will be sent

to inform the client they need to send in another test.

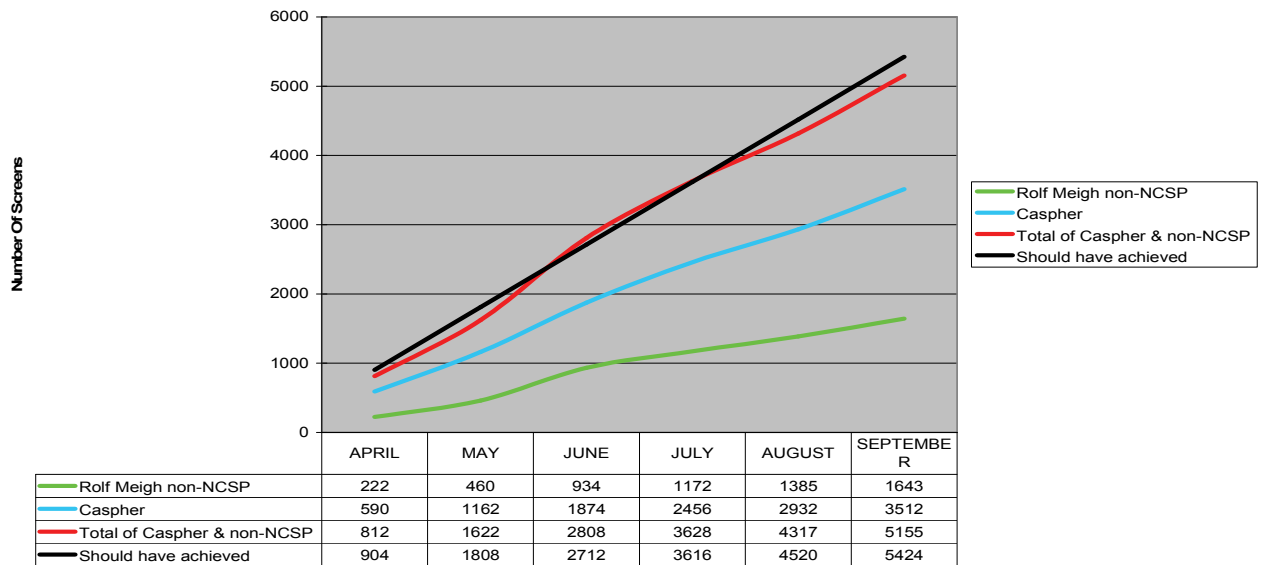
Appointments a reminder will be sent the night before for the following days' appointments and in the morning for the afternoon appointments.

Statistics to date for 2009/10

ER Accumulated Totals



Hull Accumulated totals



CASPER

Chlamydia Awareness Screening Programme for Hull and East Riding



CONIFER HOUSE
32-36 PROSPECT STREET
HULL
HU2 8PX
TEL: 01482 336397
FAX: 01482 336399
www.luvhull.co.uk / www.luveyorks.co.uk